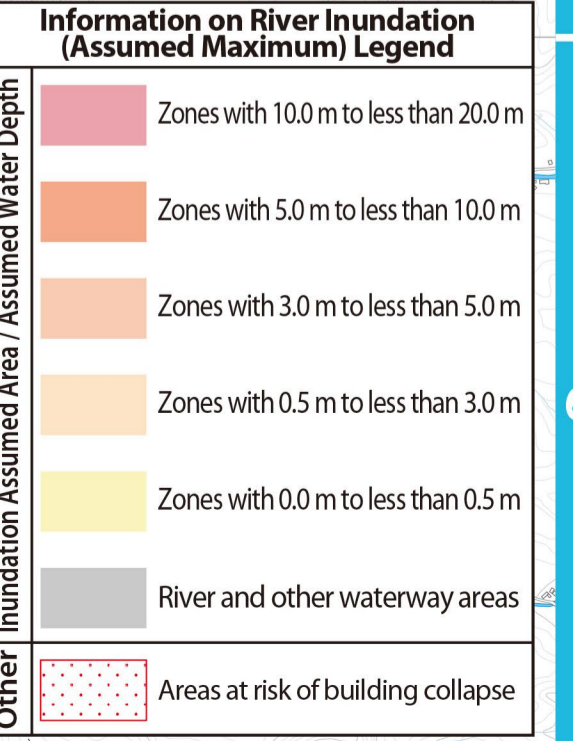
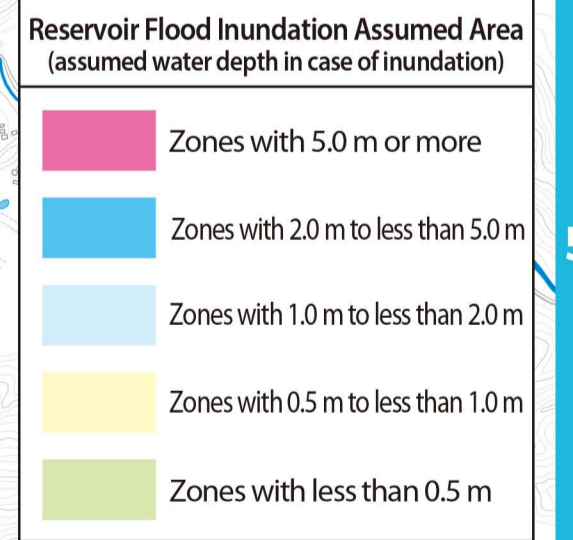
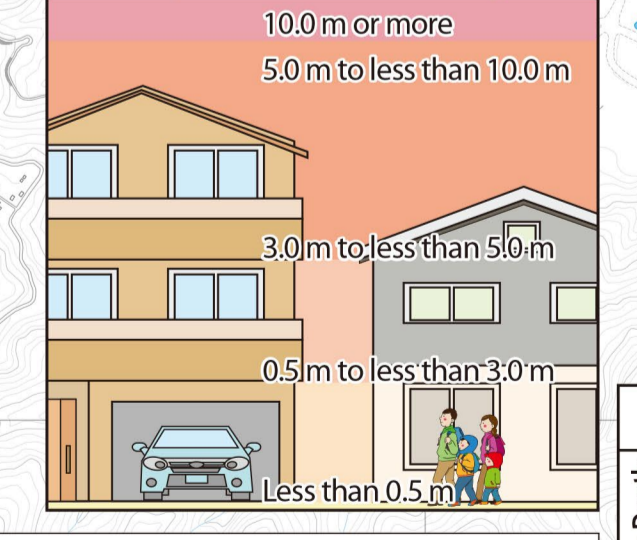


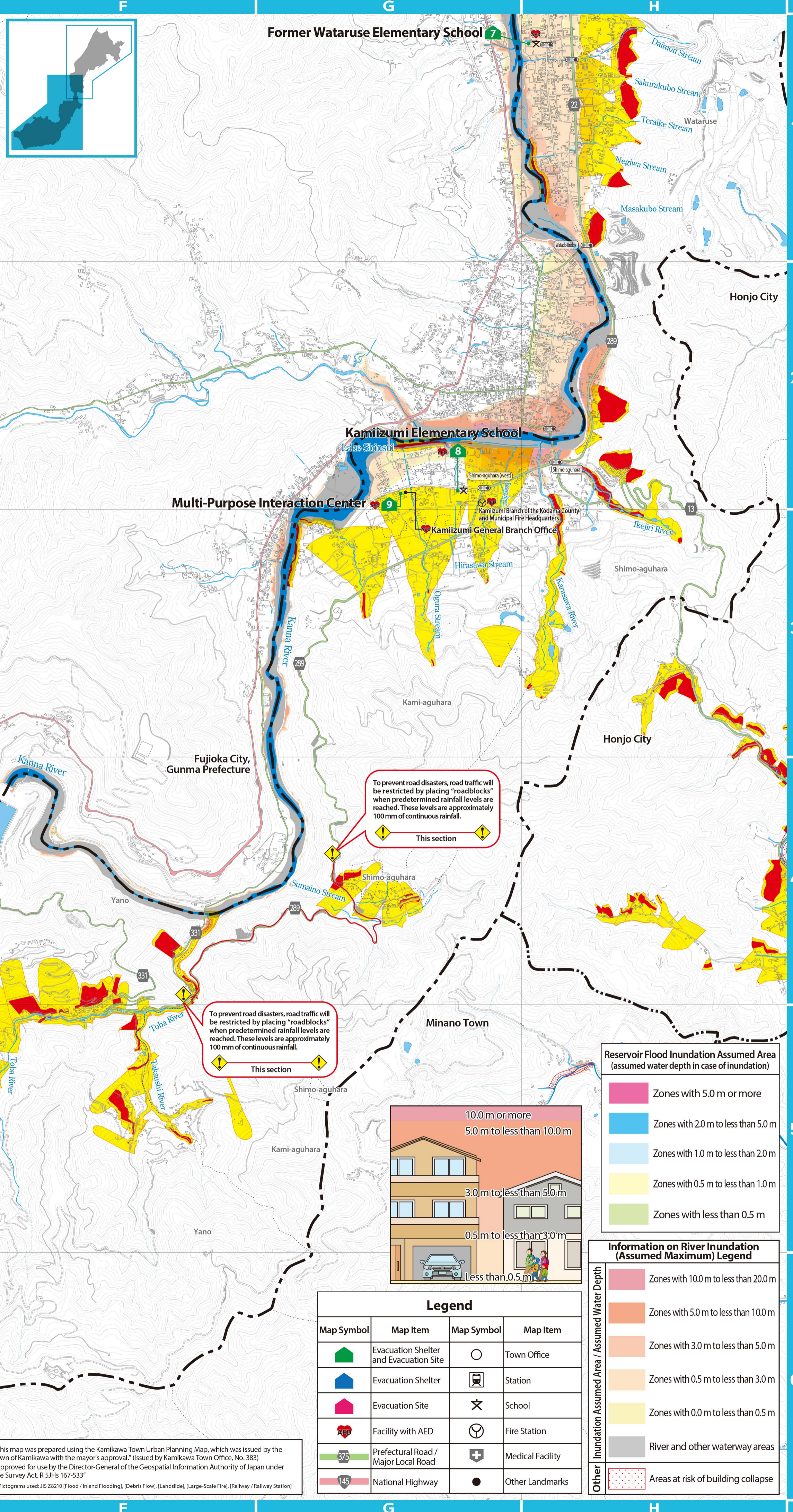
The grade-separated crossing between the JR Hachiko Line and the Farm Access Road may flood during heavy rainfall. Also, if it starts raining heavily while you are driving, there may not be enough time to put up road closure signs. Please pay close attention when driving in heavy rain or similar conditions.

To prevent road disasters, road traffic will be restricted by placing "roadblocks" when predetermined rainfall levels are reached. These levels are approximately 120 mm of continuous rainfall.

To prevent road disasters, road traffic will be restricted by placing "roadblocks" when predetermined rainfall levels are reached. These levels are approximately 100 mm of continuous rainfall.



*This map was prepared using the Kamikawa Town Urban Planning Map, which was issued by the town of Kamikawa with the mayor's approval. (Issued by Kamikawa Town Office, No. 383)
 *Approved for use by the Director-General of the Geospatial Information Authority of Japan under the Survey Act (R.5/18, 167-537)
 *Pictograms used: JIS Z8210 Flood / Inland Flooding, (Debris Flow), (Landslide), (Large-Scale Fire), (Railway / Railway Station)



To prevent road disasters, road traffic will be restricted by placing "roadblocks" when predetermined rainfall levels are reached. These levels are approximately 100 mm of continuous rainfall.