

-To Protect Precious Lives-

KAMIKAWA TOWN

Disaster Prevention Hazard Map



Issued by: **Kamikawa Town Office** (Main) Phone: 0495-77-2111
Contact: **Disaster Prevention and Environment Division** Phone: 0495-77-2124 Fax: 0495-77-3915

English

Issued in March 2026

Five-Tier Alert Levels

Evacuation Information, etc. (Alert Level)		
Alert Level Status	Actions Residents Should Take	Evacuation Information, etc.
5 Disaster occurrence or imminent	Life-threatening danger Ensure safety immediately!	Emergency Safety Measures *1
Make sure you evacuate before reaching Alert Level 4!		
4 High risk of disaster	Evacuate all persons from dangerous areas	Evacuation Order *2
3 Potential risk of disaster	The elderly and others should evacuate dangerous areas <small>- Persons requiring special care (the elderly, persons with disabilities, infants, etc.) who take time to evacuate and their supporters should evacuate - If anyone other than the elderly or others feels danger, evacuate voluntarily as well.</small>	Evacuation Advisory for the Elderly and Others *3
2 Worsening weather conditions	Confirm your evacuation plan	Heavy Rain Advisory Flood Advisory
1 Possible worsening of weather conditions in the future	Be prepared for disasters	Early Warning Information

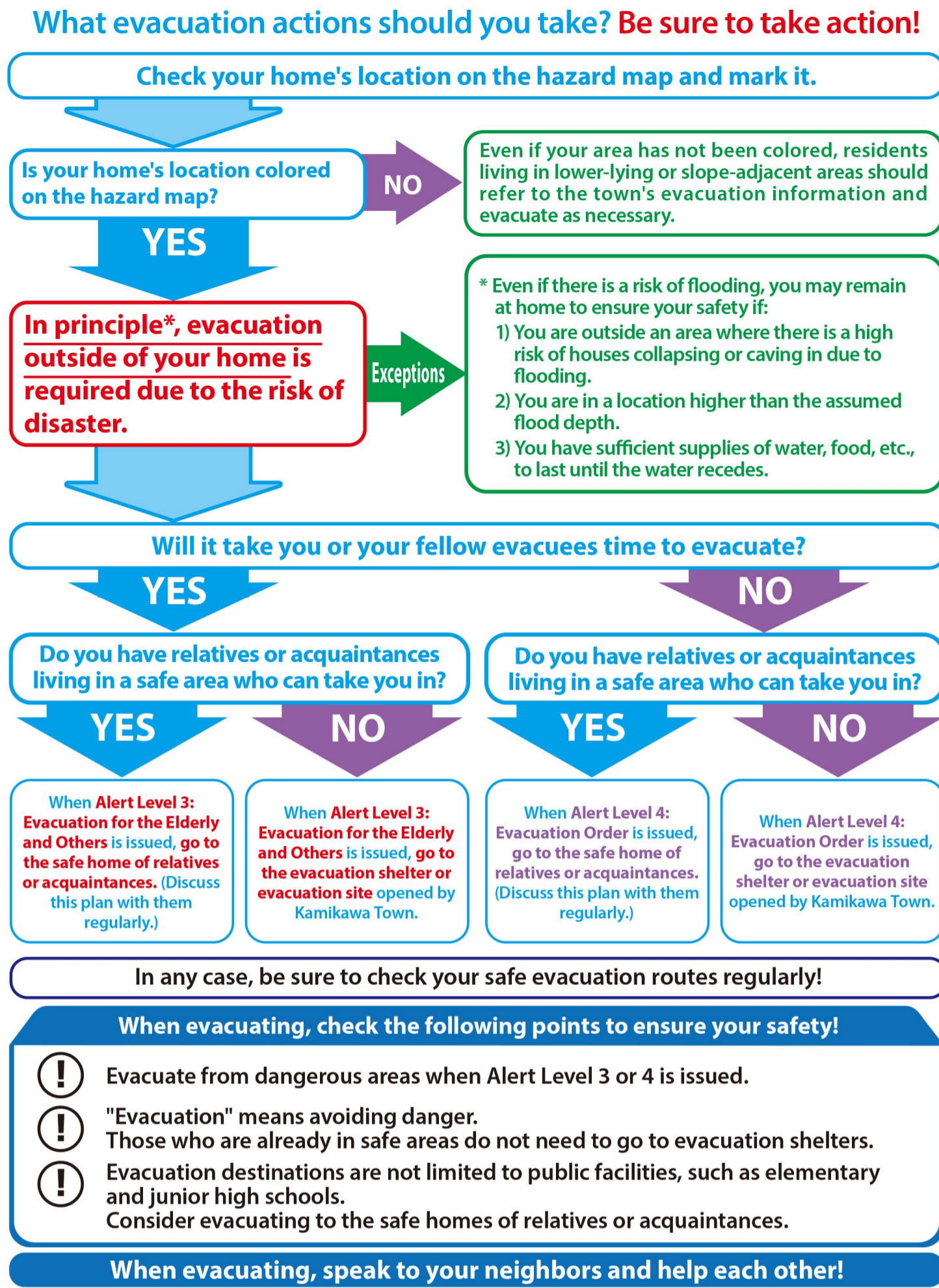
Alert Level 5 indicates that safe evacuation is no longer possible and lives are in danger. Do not wait for **Alert Level 5: Emergency Safety Measures** to be issued!

The evacuation advisory has been abolished. From now on, everyone should evacuate dangerous areas under the **Alert Level 4: Evacuation Order**.

Elderly individuals and persons with disabilities who require additional time to evacuate should leave dangerous areas under the **Alert Level 3: Evacuation Advisory for the Elderly and Others**.

*1 Alert Level 5 may not necessarily be issued due to reasons such as municipalities being unable to reliably assess disaster conditions.
*2 Evacuation orders will be issued at the same time as previous evacuation advisories.
*3 Alert Level 3 is the time when people who are not elderly or vulnerable should suspend routine activities as necessary, prepare for evacuation, and evacuate voluntarily if they sense danger.

Evacuation Action Decision Flowchart



Disaster Information Communication

◆ Gather necessary information during disasters ◆

Check warnings, advisories, and weather information issued by the Japan Meteorological Agency to prevent or mitigate disasters and prepare for anticipated damage. During disasters, it is crucial to be able to obtain information about damage and matters affecting daily life.

▼ What information is needed? ◆

- Alerts, advisories, and weather information issued by the Japan Meteorological Agency
- Anticipated damage
- Damage status in various areas
- Status of restoration for transportation, electricity, water, gas, etc.

◆ Confirm your information gathering methods ◆

You can obtain necessary information during a disaster from television, radio, and prefectural and municipal government websites. Prepare several methods for obtaining information in advance. Also, incorrect information can spread through word of mouth during disasters. Be careful not to be misled by information from unknown sources.

▼ Telephone response service for "Disaster Prevention Administrative Radio" broadcast content

The town operates a disaster prevention administrative radio station to deliver important information to all residents, such as disaster prevention information. You can replay broadcast content by phone. Please use this service. **Call 0495-77-5351**

▼ Register for "Kamikawa Town Disaster Prevention Information Email"!

Please register for the disaster prevention information email to access information anywhere via your cell phone or smart phone during disasters and take action to protect your safety.

To register, send a blank email to "skamikawa@m.bmb.jp".
← You can also register by scanning the QR code.

There is no charge for using this service. However, users are responsible for any communication fees incurred during registration, cancellation, or email reception.

◆ Gather information ◆

- Check information on TV: You can check for disaster information. How to use the D button: 1) Press the D button on the remote control, 2) Select "Disaster Prevention & Living Information".
- Japan Meteorological Agency: Provides information on disaster prevention, weather, Kikaku (hazard distribution), heavy rain/snow, earthquakes/volcanoes, etc.
- Yahoo! Disaster Alert: Push notifications will alert you to disaster information, including rain forecasts.
- Saitama Prefecture River Disaster Prevention Information: Information about rivers within the prefecture, including water levels and rainfall.
- Saitama Prefecture Landslide Disaster Warning Information System: Provides landslide disaster warning information, hazard levels, etc.

List of Evacuation Shelters

- Evacuation Shelter and Evacuation Site
- Evacuation Shelter This is a facility where disaster victims live for a certain period during a disaster as a shelter.
- Evacuation Site This is a place to evacuate to in order to protect your life from imminent disaster risks.

	Facility Name	Location	Phone Number	In case of landslides	In case of flooding or inundation	Coordinates
1	Tansho Elementary School	Sekiguchi 110-1	0495-77-3502	○	○	C - 2
2	Tansho Daycare Center	Yokaichi 222-1	0495-77-4048	○	○	D - 3
3	Kamikawa Junior High School	Niisato 450	0495-77-2409	○	○	C - 3
4	Aoyagi Elementary School	Ninomiya 60-1	0495-77-2109	○	○	B - 3
5	Kamikawa Kindergarten	Niisato 362-2	0495-77-4188	○	○	C - 3
6	Aoyagi Daycare Center	Niisato 2787-5	0495-77-3596	○	○	C - 4
7	Former Wataruse Elementary School	Wataruse 540-1	0274-52-2765	○	—	A - 5 H - 1
8	Kamiizumi Elementary School	Shimo-aguhara 875-1	0274-52-2767	—	○	G - 2
9	Multi-Purpose Interaction Center	Shimo-aguhara 1088	0274-52-2588	—	○	G - 2

	Facility Name	Location	Phone Number	In case of landslides	In case of flooding or inundation	Coordinates
1	Central Community Center	Uetake 867-2	0495-77-3671	○	○	C - 2
2	Employment Improvement Center	Uetake 900-1	0495-77-4651	○	○	C - 2
3	Ikoinsato Comprehensive Welfare Center	Sekiguchi 90	0495-74-1155	○	○	C - 2
4	Fureai Center	Ninomiya 166-2	0495-77-1521	○	○	B - 3

	Facility Name	Location	Phone Number	In case of landslides	In case of flooding or inundation	Coordinates
1	Mihara Park	Motohara 200-9	—	○	○	E - 2
2	Tansho Park	Yokaichi 2570-7	—	○	—	D - 3
3	Aoyagi Park	Niisato 2787-1	—	○	○	C - 4

How to Read Hazard Maps

▼ About Landslide Disaster Warning Areas

- These landslide disaster warning areas, etc. are based on data surveyed by Saitama Prefecture regarding steep slopes and debris flows.
- These landslide disaster warning areas, etc. were identified through field surveys and other methods. Note that landslides may occur in areas not shown on the map.

▼ About Flood Inundation Assumed Areas

- These flood inundation assumed areas are based on data collected by the Saitama Prefecture and the Japanese Ministry of Land, Infrastructure, Transport and Tourism.
- These flood inundation assumed areas depict the areas and flooding depths that are anticipated to be flooded in the flood forecast areas of the Karasu and Koyama river basins. These areas are based on the maximum assumed rainfall (Karasu River: 579 mm in 72 hours; Koyama River: 636 mm in 24 hours).
- These flood inundation assumed areas are based on simulations that predict flooding conditions if the Karasu and Koyama river basins were flooded by the maximum amount of rainfall assumed for these basins (Karasu River: 579 mm in 72 hours; Koyama River: 636 mm in 24 hours). The simulations take into account the current development status of the river channels and flood control facilities in these basins.
- This simulation **does not account for flooding caused by breaches in tributaries, rainfall that exceeds the assumed amount, or flooding from inland waters**. Therefore, flooding may occur in areas not designated as flood inundation assumed areas, and the assumed water depth may differ from the actual depth of flooding.

◆ How to Read Hazard Information ◆

Landslides

- Landslide Disaster Warning Area: Areas at risk of landslide damage
- Landslide Disaster Special Warning Area: Areas where buildings may be damaged, posing a significant risk to the lives or physical safety of residents and others

Flood Damage (Flood Inundation Assumed Area (Flooding Depth))

- 10.0 m or more
- 5.0 m to less than 10.0 m
- 3.0 m to less than 5.0 m
- 0.5 m to less than 3.0 m
- Less than 0.5 m

House Collapse (Flood Hazard Area with Anticipated House Collapse (Riverbank Erosion))

Areas where wooden and non-wooden houses may collapse due to riverbank erosion during flooding

- Wooden houses may collapse due to fast-moving water.
- The ground may erode, causing entire buildings to collapse.

Methods of Evacuation

Evacuation does not only mean moving to shelters or sites at public facilities, such as elementary and junior high schools. The method varies depending on the area in which you live, the situation at hand, and the individual. Decide in advance how you will act during an emergency.

Evacuation with Displacement

- Evacuation shelters and sites opened by municipalities
- Safe homes of relatives or acquaintances, etc.

Ensuring indoor Safety

Verify whether your home is safe using hazard maps.

- Your home is not located in a flood hazard area with anticipated house collapse
- Your living space is higher than the assumed flooding depth
- You can wait until the water recedes, and you have sufficient supplies of water and food

It's safe here!

Emergency Safety Measures

Emergency safety measures refer to the immediate relocation to a safer location. This ensures personal safety from life-threatening danger to the greatest extent possible. It occurs when residents required to evacuate with displacement fail to do so in a timely manner, resulting in a delayed evacuation and, consequently, an imminent disaster, which renders relocation for safety purposes impossible.

- Move to a higher place in your home
- Move to a taller building nearby
- Move to a room that is far from the slope

About Evacuation Shelters

Please follow the rules at the evacuation shelter.

- Observe the rules regarding wake-up and bedtimes, toilet usage, smoking areas, etc.
- Entering or peering into others' living spaces or shouting loudly is considered a breach of etiquette.

Let's participate in shelter operations by dividing up the tasks

- Evacuees should help with tasks such as reception, cleaning, meal preparation, and supply distribution to the best of their ability.
- Let's all participate in shelter operations by helping each other.

Emergency Items and Supplies

Emergency Items (Examples)

Prepare and regularly check these items so they're ready to grab immediately when needed.

- Portable radio**: Radio, Batteries (prepare extra)
- First aid medical supplies**: First aid kit, Household medications (medications for chronic conditions, etc.), Infection Prevention Measures (Mask, Hand sanitizer, Thermometer)
- Emergency foods**: Items that can be eaten without cooking (Drinking water, Hardtack, Alpha rice, Canned food, Candy, chocolate, etc.)
- Lighting equipment**: LED Lantern, Flashlight, Batteries (prepare extra)
- Other items**: Cash (with plenty of coins), Whistle (for calling for help), Change of clothes, Toothbrush, Towel, Plastic bag, Disposable chopsticks (prepare extra), Paper plates/cups, Wet wipes, Cell phone or smartphone chargers, Plastic wrap (for bandaging wounds or covering dishes), Portable toilet, Newspaper, Earplugs/eye mask
- Items needed in each household**: Baby supplies (formula, baby food, diapers, etc.), Feminine hygiene products, Contact lenses and eyeglasses, Dentures and hearing aids, Backpack

Emergency Supplies (Examples)

Ensure that you can live for at least three days, and preferably seven days, until disaster recovery.

- Drinking water**: Drinking water (aim for three liters per person per day), Water storage tanks, etc.
- Emergency foods**: Rice (alpha rice is also convenient), Canned or retort pouch foods, Pickled plums, seasonings, etc., Dried foods, candy, chocolate (snacks, etc.)
- Fuel**: Tabletop stove, Gas cylinder, Solid fuel
- Other items**: Domestic water (stored in a bathtub, etc.), Blankets, sleeping bags, toiletries, etc., Cooking utensils (pots, kettles, etc.), Buckets and other outdoor gear, Toothbrush and toothpaste, shaver, etc.

Recommended Outfit for Evacuating

- Put on a helmet (disaster hood)
- Carry emergency items in a backpack
- Wear work gloves or regular gloves
- Wear long sleeves and long pants
- Flame-resistant cotton clothing is best.
- Wear sturdy shoes with thick soles that you're used to walking in

Prepare for Difficulty Returning Home

If a major earthquake strikes during the day, transportation disruptions may leave you stranded and unable to return home. Assuming you will walk home from work or school, prepare accordingly on a daily basis.

- Prepare emergency items**: Portable radio, helmet (disaster hood), sneakers, emergency foods, flashlight, leather gloves, map, cold/heat protection gear, etc.
- Prepare a route map for returning home**: Depending on the situation, roads may become impassable, so it's advisable to plan multiple routes.
- Establish a method of contacting family members**: It is important for all family members to confirm the following items in advance.
 - Methods for confirming safety during a disaster
 - Family meeting place
 - Route for walking home